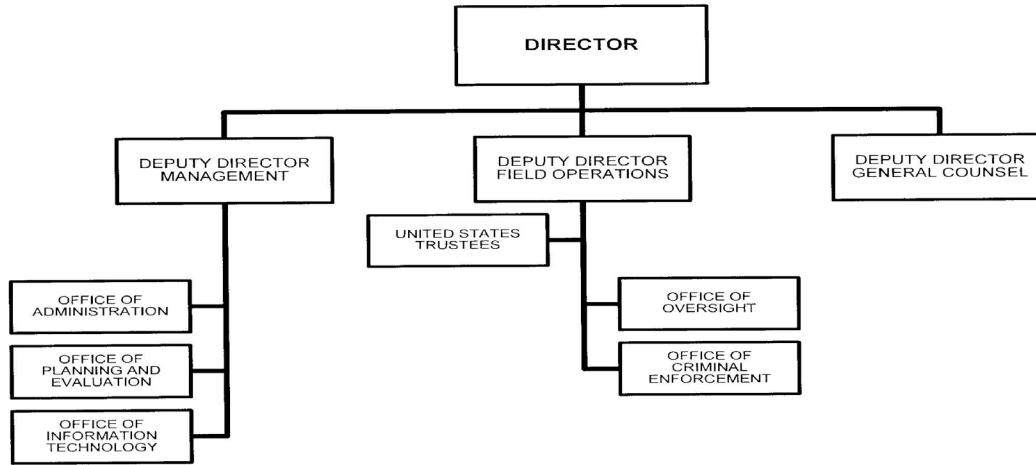



# A: Organizational Chart

## EXECUTIVE OFFICE FOR UNITED STATES TRUSTEES



The Principal or ranking Deputy is determined via an internal written designation by the Attorney General or other authorized official.

Approved by:  Date: 11/26/12  
ERIC H. HOLDER, JR.  
Attorney General

B. Summary of Requirements

## Summary of Requirements

U.S. Trustees  
Salaries and Expenses  
(Dollars in Thousands)

	FY 2017 Request		
	Direct Pos.	Estimate FTE	Amount
<b>2015 Enacted 1/</b>	[1,314]	1,099	225,908
<b>Total 2015 Enacted</b>	[1,314]	1,099	225,908
<b>2016 Enacted</b>	[1,314]	1,184	225,908
<b>Base Adjustments</b>			
Pay and Benefits	0	0	1,482
Domestic Rent and Facilities	0	0	192
<b>Total Base Adjustments</b>	<b>0</b>	<b>0</b>	<b>1,674</b>
<b>Total Technical and Base Adjustments</b>	<b>0</b>	<b>0</b>	<b>1,674</b>
<b>2017 Current Services</b>	[1,314]	1,184	227,582
<b>Program Changes</b>			
Increases:			
Section 341 Meeting Room Security	0	0	2,135
Subtotal, Increases	0	0	2,135
<b>Total Program Changes</b>	<b>0</b>	<b>0</b>	<b>2,135</b>
<b>2017 Total Request</b>	[1,314]	1,184	229,717
2016 - 2017 Total Change	[0]	0	3,809

<sup>1/</sup> FY 2015 FTE is actual

**Summary of Requirements**  
 U.S. Trustees  
 Salaries and Expenses  
 (Dollars in Thousands)

Program Activity	FY 2015 Appropriation Enacted			FY 2016 Enacted			FY 2017 Technical and Base Adjustments			FY 2017 Current Services		
	Direct Pos.	Actual FTE	Amount	Direct Pos.	Est. FTE	Amount	Direct Pos.	Est. FTE	Amount	Direct Pos.	Est. FTE	Amount
Administration of Cases	[1,314]	1,099	225,908	[1,314]	1,184	225,908	0	0	1,674	[1,314]	1,184	227,582
<b>Total Direct</b>	<b>[1,314]</b>	<b>1,099</b>	<b>225,908</b>	<b>[1,314]</b>	<b>1,184</b>	<b>225,908</b>	<b>0</b>	<b>0</b>	<b>1,674</b>	<b>[1,314]</b>	<b>1,184</b>	<b>227,582</b>
Balance Rescission			0			0			0			0
<b>Total Direct with Rescission</b>			<b>225,908</b>			<b>225,908</b>			<b>1,674</b>			<b>227,582</b>
Reimbursable FTE		0			0			0			0	
<b>Total Direct and Reimb. FTE</b>		<b>1,099</b>			<b>1,184</b>			<b>0</b>			<b>1,184</b>	
Other FTE:												
LEAP		0			0			0			0	
Overtime		0			0			0			0	
<b>Grand Total, FTE</b>		<b>1,099</b>			<b>1,184</b>			<b>0</b>			<b>1,184</b>	

Program Activity	2017 Increases			2017 Offsets			2017 Request		
	Direct Pos.	Est. FTE	Amount	Direct Pos.	Est. FTE	Amount	Direct Pos.	Est. FTE	Amount
Administration of Cases	0	0	2,135	0	0	0	[1,314]	1,184	229,717
<b>Total Direct</b>	<b>0</b>	<b>0</b>	<b>2,135</b>	<b>0</b>	<b>0</b>	<b>0</b>	<b>[1,314]</b>	<b>1,184</b>	<b>229,717</b>
Balance Rescission			0			0			0
<b>Total Direct with Rescission</b>			<b>2,135</b>			<b>0</b>			<b>229,717</b>
Reimbursable FTE		0			0			0	
<b>Total Direct and Reimb. FTE</b>		<b>0</b>			<b>0</b>			<b>1,184</b>	
Other FTE:									
LEAP		0			0			0	
Overtime		0			0			0	
<b>Grand Total, FTE</b>		<b>0</b>			<b>0</b>			<b>1,184</b>	

**FY 2017 Program Increases/Offsets by Decision Unit**

U.S. Trustees  
 Salaries and Expenses  
 (Dollars in Thousands)

Program Increases	Location of Description by Program Activity	Administration of Cases				Total Increases			
		Direct Pos.	Agt./Atty.	Est. FTE	Amount	Direct Pos.	Agt./Atty.	Est. FTE	Amount
Section 341 Meeting Room Security		0	0	0	2,135	0	0	0	2,135
<b>Total Program Increases</b>		<b>0</b>	<b>0</b>	<b>0</b>	<b>2,135</b>	<b>0</b>	<b>0</b>	<b>0</b>	<b>2,135</b>

Program Offsets	Location of Description by Program Activity	Administration of Cases				Total Offsets			
		Direct Pos.	Agt./Atty.	Est. FTE	Amount	Direct Pos.	Agt./Atty.	Est. FTE	Amount
No Program Offsets									
<b>Total Program Offsets</b>									

**Resources by Department of Justice Strategic Goal and Objective**

U.S. Trustees  
Salaries and Expenses  
(Dollars in Thousands)

Strategic Goal and Strategic Objective	FY 2015 Appropriation Enacted		FY 2016 Enacted		FY 2017 Current Services		FY 2017 Increases		FY 2017 Offsets		FY 2017 Total Request	
	Direct & Reimb FTE	Direct Amount	Direct & Reimb FTE	Direct Amount	Direct & Reimb FTE	Direct Amount	Direct & Reimb FTE	Direct Amount	Direct & Reimb FTE	Direct Amount	Direct & Reimb FTE	Direct Amount
<b>Goal 2 Prevent crime, protect the rights of the American people, and enforce federal law</b>												
2.6 Protect the federal fisc and defend the interests of the United States	1,099	225,908	1,184	225,908	1,184	227,582	0	2,135	0	0	1,184	229,717
<b>Subtotal, Goal 2</b>	<b>1,099</b>	<b>225,908</b>	<b>1,184</b>	<b>225,908</b>	<b>1,184</b>	<b>227,582</b>	<b>0</b>	<b>2,135</b>	<b>0</b>	<b>0</b>	<b>1,184</b>	<b>229,717</b>
<b>TOTAL</b>	<b>1,099</b>	<b>225,908</b>	<b>1,184</b>	<b>225,908</b>	<b>1,184</b>	<b>227,582</b>	<b>0</b>	<b>2,135</b>	<b>0</b>	<b>0</b>	<b>1,184</b>	<b>229,717</b>

### Justifications for Technical and Base Adjustments

U.S. Trustees  
Salaries and Expenses  
(Dollars in Thousands)

	Direct Pos.	Estimate FTE	Amount
<b>Pay and Benefits</b>			
<p>1 <u>2017 Pay Raise - 1.6%</u> This request provides for a proposed 1.6 percent pay raise to be effective in January of 2017. The amount requested, \$1,929,000 represents the pay amounts for 3/4 of the fiscal year plus appropriate benefits (\$1,546,000 for pay and \$383,000 for benefits).</p>	0	0	1,929
<p>2 <u>Annualization of 2016 Pay Raise</u> This pay annualization represents first quarter amounts (October through December) of the 2016 pay increase of 1.3 percent included in the 2016 President's Budget. The amount requested \$250,000, represents the pay amounts for 1/4 of the fiscal year plus appropriate benefits (\$191,000 for pay and \$59,000 for benefits).</p>	0	0	250
<p>3 <u>Changes in Compensable Days</u> The decreased cost for two compensable days in FY 2017 compared to FY 2016 is calculated by dividing the FY 2016 estimated personnel compensation, \$127,084,000, and applicable benefits, \$31,135,000, by 262 compensable days is -\$1,208,000.</p>	0	0	-1,208
<p>4 <u>Health Insurance</u> Effective January 2017, the component's contribution to Federal employees' health insurance increases by 3.2 percent. The additional amount required is \$338,000.</p>	0	0	338
<p>5 <u>Retirement</u> Agency retirement contributions increase as employees under CSRS retire and are replaced by FERS employees. Based on U.S. Department of Justice Agency estimates, we project that the DOJ workforce will convert from CSRS to FERS at a rate of 0.8 percent per year, for both LEO and Non-LEO, based on the past 5 years of DOJ retirement data. The requested increase of \$173,000 is necessary to meet our increased retirement obligations as a result of this conversion.</p>	0	0	173
<b>Subtotal, Pay and Benefits</b>	<b>0</b>	<b>0</b>	<b>1,482</b>

### Justifications for Technical and Base Adjustments

U.S. Trustees  
Salaries and Expenses  
(Dollars in Thousands)

	Direct Pos.	Estimate FTE	Amount
<b>Domestic Rent and Facilities</b>			
<b>1 <u>GSA Rent</u></b> GSA will continue to charge rental rates that approximate those charged to commercial tenants for equivalent space and related services. The requested increase of \$94,000 will meet our commitment to GSA. The costs associated with GSA rent were derived through the use of an automated system, which uses the latest inventory data, including rate increases to be effective FY 2017 for each building currently occupied by Department of Justice components, as well as the costs of new space to be occupied.	0	0	94
<b>2 <u>Guard Service</u></b> This includes Department of Homeland Security (DHS) Federal Protective Service charges, Justice Protective Service charges and other security services across the country. The requested increase of \$98,000 is required to meet these commitments.	0	0	98
<b>Subtotal, Domestic Rent and Facilities</b>	<b>0</b>	<b>0</b>	<b>192</b>
<b>TOTAL DIRECT TECHNICAL and BASE ADJUSTMENTS</b>	<b>0</b>	<b>0</b>	<b>1,674</b>

### Crosswalk of 2015 Availability

U.S. Trustees  
Salaries and Expenses  
(Dollars in Thousands)

Program Activity	FY 2015 Appropriation Enacted			Reprogramming/Transfers			Carryover	Recoveries/ Refunds	FY 2015 Availability		
	Direct Pos.	Actual FTE	Amount	Direct Pos.	Actual FTE	Amount	Amount	Amount	Direct Pos.	Actual FTE	Amount
Administration of Cases	[1,314]	1,099	225,908	0	0	-82	8,191	665	[1,314]	1,099	234,682
<b>Total Direct</b>	<b>[1,314]</b>	<b>1,099</b>	<b>225,908</b>	<b>0</b>	<b>0</b>	<b>-82</b>	<b>8,191</b>	<b>665</b>	<b>[1,314]</b>	<b>1,099</b>	<b>234,682</b>
Balance Rescission			0			0	0	0			0
Total Direct with Rescission			225,908			-82	8,191	665			234,682
Reimbursable FTE		0			0					0	
Total Direct and Reimb. FTE		1,099			0					1,099	
Other FTE:											
LEAP FTE		0			0					0	
Overtime		0			0					0	
Grand Total, FTE		1,099			0					1,099	

**Reprogramming/Transfers:** The USTP transferred \$82,000 to DOJ for enhanced cyber security services.

**Carryover:** The USTP plans to use these funds for upward adjustments to obligations and to address other program needs.

**Recoveries/Refunds:** The USTP plans to use these funds for upward adjustments to obligations and to address other program needs.



### Crosswalk of 2016 Availability

U.S. Trustees  
Salaries and Expenses  
(Dollars in Thousands)

Program Activity	FY 2016 Enacted			Reprogramming/Transfers			Carryover	Recoveries/ Refunds	FY 2016 Availability		
	Direct Pos.	Est. FTE	Amount	Direct Pos.	Est. FTE	Amount	Amount	Amount	Direct Pos.	Est. FTE	Amount
Administration of Cases	[1,314]	1,184	225,908	0	0	0	10,880	0	[1,314]	1,184	236,788
<b>Total Direct</b>	<b>[1,314]</b>	<b>1,184</b>	<b>225,908</b>	<b>0</b>	<b>0</b>	<b>0</b>	<b>10,880</b>	<b>0</b>	<b>[1,314]</b>	<b>1,184</b>	<b>236,788</b>
Balance Rescission			0			0	0	0			0
Total Direct with Rescission			225,908			0	10,880	0			236,788
Reimbursable FTE		0			0					0	
Total Direct and Reimb. FTE		1,184			0					1,184	
Other FTE:											
LEAP FTE		0			0					0	
Overtime		0			0					0	
Grand Total, FTE		1,184			0					1,184	

**Reprogramming/Transfers:**

**Carryover:** The USTP plans to use these funds for upward adjustments to obligations and to address other program needs.

**Recoveries/Refunds:**

### Summary of Reimbursable Resources

U.S. Trustees  
Salaries and Expenses  
(Dollars in Thousands)

Collections by Source	2015 Actual			2016 Estimate			2017 Request			Increase/Decrease		
	Reimb. Pos.	Reimb. FTE	Amount	Reimb. Pos.	Reimb. FTE	Amount	Reimb. Pos.	Reimb. FTE	Amount	Reimb. Pos.	Reimb. FTE	Amount
Office of Attorney Recruitment/Management	0	0	9	0	0	7	0	0	7	0	0	0
<b>Budgetary Resources</b>	<b>0</b>	<b>0</b>	<b>9</b>	<b>0</b>	<b>0</b>	<b>7</b>	<b>0</b>	<b>0</b>	<b>7</b>	<b>0</b>	<b>0</b>	<b>0</b>

Obligations by Program Activity	2015 Actual			2016 Estimate			2017 Request			Increase/Decrease		
	Reimb. Pos.	Reimb. FTE	Amount	Reimb. Pos.	Reimb. FTE	Amount	Reimb. Pos.	Reimb. FTE	Amount	Reimb. Pos.	Reimb. FTE	Amount
Administration of Cases	0	0	9	0	0	7	0	0	7	0	0	0
<b>Budgetary Resources</b>	<b>0</b>	<b>0</b>	<b>9</b>	<b>0</b>	<b>0</b>	<b>7</b>	<b>0</b>	<b>0</b>	<b>7</b>	<b>0</b>	<b>0</b>	<b>0</b>

**Detail of Permanent Positions by Category**

U.S. Trustees  
Salaries and Expenses  
(Dollars in Thousands)

Category	FY 2015 Enacted		FY 2016 Enacted		FY 2017 Request				
	Direct Pos.	Reimb. Pos.	Direct Pos.	Reimb. Pos.	ATBs	Program Increases	Program Offsets	Total Direct Pos.	Total Reimb. Pos.
Security Specialists (080)	[2]	0	[2]	0	0	0	0	[2]	0
Personnel Management (0200-0260)	[10]	0	[10]	0	0	0	0	[10]	0
Clerical and Office Services (0300-0399)	[95]	0	[95]	0	0	0	0	[95]	0
Accounting and Budget (500-599)	[19]	0	[19]	0	0	0	0	[19]	0
Paralegals / Other Law (900-998)	[460]	0	[460]	0	0	0	0	[460]	0
Attorneys (905)	[436]	0	[436]	0	0	0	0	[436]	0
Mathematics and Statistics Group	[2]	0	[2]	0	0	0	0	[2]	0
Information Technology Mgmt (2210-2299)	[39]	0	[39]	0	0	0	0	[39]	0
Others	[2]	0	[2]	0	0	0	0	[2]	0
Contracting & Procurement	[4]	0	[4]	0	0	0	0	[4]	0
Bankruptcy Analyst	[245]	0	[245]	0	0	0	0	[245]	0
<b>Total</b>	<b>[1,314]</b>	<b>0</b>	<b>[1,314]</b>	<b>0</b>	<b>0</b>	<b>0</b>	<b>0</b>	<b>[1,314]</b>	<b>0</b>
Headquarters Washington D.C.	[125]	0	[125]	0	0	0	0	[125]	0
US Fields	[1,189]	0	[1,189]	0	0	0	0	[1,189]	0
Foreign Field	0	0	0	0	0	0	0	0	0
<b>Total</b>	<b>[1,314]</b>	<b>0</b>	<b>[1,314]</b>	<b>0</b>	<b>0</b>	<b>0</b>	<b>0</b>	<b>[1,314]</b>	<b>0</b>

## Financial Analysis of Program Changes

U.S. Trustees  
Salaries and Expenses  
(Dollars in Thousands)

Grades	Administration of Cases				Total Program Changes	
	Program Increases		Program Decreases		Direct Pos.	Amount
	Direct Pos.	Amount	Direct Pos.	Amount		
No grades	0	0	0	0	0	0
<b>Total Positions and Annual Amount</b>	<b>0</b>	<b>0</b>	<b>0</b>	<b>0</b>	<b>0</b>	<b>0</b>
Lapse (-)	0	0	0	0	0	0
11.5 - Other personnel compensation		0		0		0
<b>Total FTEs and Personnel Compensation</b>	<b>0</b>	<b>0</b>	<b>0</b>	<b>0</b>	<b>0</b>	<b>0</b>
25.3 - Other goods and services from federal sources		2,135		0		2,135
<b>Total Program Change Requests</b>	<b>0</b>	<b>2,135</b>	<b>0</b>	<b>0</b>	<b>0</b>	<b>2,135</b>

### Summary of Requirements by Object Class

U.S. Trustees  
Salaries and Expenses  
(Dollars in Thousands)

Object Class	FY 2015 Actual		FY 2016 Enacted		FY 2017 Request		Increase/Decrease	
	Act. FTE	Amount	Direct FTE	Amount	Direct FTE	Amount	Direct FTE	Amount
11.1 - Full-time permanent	1,099	114,375	1,184	126,447	1,184	126,971	0	524
11.3 - Other than full-time permanent	0	3,213	0	1,664	0	1,660	0	-4
11.5 - Other personnel compensation	0	1,083	0	921	0	921	0	0
<i>Overtime</i>	0	0	0	0	0	0	0	0
<i>Other Compensation</i>	0	0	0	0	0	0	0	0
11.8 - Special personal services payments	0	3	0	0	0	0	0	0
<b>Total</b>	<b>1,099</b>	<b>118,674</b>	<b>1,184</b>	<b>129,032</b>	<b>1,184</b>	<b>129,552</b>	<b>0</b>	<b>520</b>
<b>Other Object Classes</b>								
12.1 - Civilian personnel benefits		37,990		41,481		41,831	0	350
13.0 - Benefits for former personnel		11		9		9	0	0
21.0 - Travel and transportation of persons		1,949		2,153		2,013	0	-140
22.0 - Transportation of things		506		475		475	0	0
23.1 - Rental payments to GSA		25,325		26,473		26,567	0	94
23.2 - Rental payments to others		448		452		452	0	0
23.3 - Communications, utilities, and miscellaneous charges		3,555		3,309		3,309	0	0
24.0 - Printing and reproduction		54		74		74	0	0
25.1 - Advisory and assistance services		7,271		3,761		1,727	0	-2,034
25.2 - Other services from non-federal sources		3,196		2,954		2,954	0	0
25.3 - Other goods and services from federal sources		18,041		16,687		18,924	0	2,237
25.4 - Operation and maintenance of facilities		1,012		1,896		1,896	0	0
25.6 - Medical care		181		160		160	0	0
25.7 - Operation and maintenance of equipment		363		429		429	0	0
26.0 - Supplies and materials		657		858		858	0	0
31.0 - Equipment		3,855		3,035		2,035	0	-1,000
32.0 - Land and structures		637		0		0	0	0
42.0 - Insurance claims and indemnities		77		1		1	0	0
<b>Total Obligations</b>		<b>223,802</b>		<b>233,239</b>		<b>233,266</b>	<b>0</b>	<b>27</b>
<b>Net of:</b>								
Unobligated Balance, Start-of-Year		-8,191		-10,880		-3,549	0	7,331
Transfers/Reprogramming		82		0		0	0	0
Recoveries/Refunds		-665		0		0	0	0
Balance Rescission		0		0		0	0	0
Unobligated End-of-Year, Available		10,880		3,549		0	0	-3,549
Unobligated End-of-Year, Expiring		0		0		0	0	0
<b>Total Direct Requirements</b>		<b>225,908</b>		<b>225,908</b>		<b>229,717</b>		<b>3,809</b>
Reimbursable FTE								
12.1 Department of Justice - Attorney Loan Recruitment (Reimbursable)	0	9	0	7	0	7	0	0