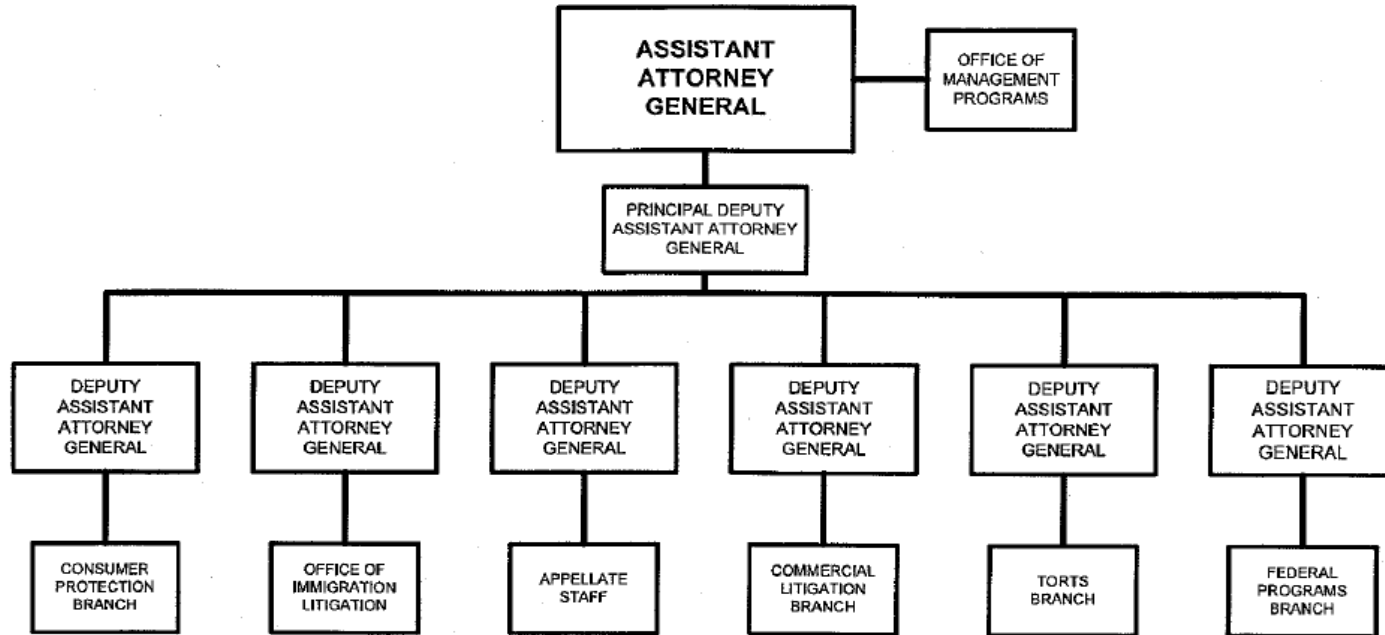
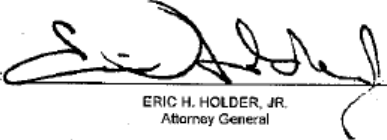


A. Organizational Chart

CIVIL DIVISION



Approved by:

  
ERIC H. HOLDER, JR.  
Attorney General

Date: April 3, 2012

B. Summary of Requirements

## Summary of Requirements

Civil Division  
Salaries and Expenses  
(Dollars in Thousands)

	FY 2022 Request		
	Positions	Estimate FTE	Amount
<b>2020 Enacted 1/</b>	<b>1,136</b>	<b>1,037</b>	<b>295,084</b>
<b>Total 2020 Enacted</b>	<b>1,136</b>	<b>1,037</b>	<b>295,084</b>
<b>2021 Enacted</b>	<b>1,136</b>	<b>1,136</b>	<b>316,438</b>
<b>Base Adjustments</b>			
Pay and Benefits	0	0	6,817
Domestic Rent and Facilities	0	0	712
Foreign Expenses	0	0	-185
<b>Total Base Adjustments</b>	<b>0</b>	<b>0</b>	<b>7,344</b>
<b>Total Technical and Base Adjustments</b>	<b>0</b>	<b>0</b>	<b>7,344</b>
<b>2022 Current Services</b>	<b>1,136</b>	<b>1,136</b>	<b>323,782</b>
<b>Program Changes</b>			
Increases:			
COVID-related Fraud	35	18	4,755
Subtotal, Increases	35	18	4,755
<b>Total Program Changes</b>	<b>35</b>	<b>18</b>	<b>4,755</b>
<b>2022 Total Request</b>	<b>1,171</b>	<b>1,154</b>	<b>328,537</b>
2021 - 2022 Total Change	35	18	12,099

<sup>1/</sup> FY 2020 FTE is actual

### Summary of Requirements

Civil Division  
Salaries and Expenses  
(Dollars in Thousands)

Program Activity	FY 2020 Enacted			FY 2021 Enacted			FY 2022 Technical and Base Adjustments			FY 2022 Current Services		
	Positions	Actual FTE	Amount	Positions	Est. FTE	Amount	Positions	Est. FTE	Amount	Positions	Est. FTE	Amount
Legal Representation	1,136	1,037	295,084	1,136	1,136	316,438	0	0	7,344	1,136	1,136	323,782
<b>Total Direct</b>	<b>1,136</b>	<b>1,037</b>	<b>295,084</b>	<b>1,136</b>	<b>1,136</b>	<b>316,438</b>	<b>0</b>	<b>0</b>	<b>7,344</b>	<b>1,136</b>	<b>1,136</b>	<b>323,782</b>
Balance Rescission			0			0			0			0
<b>Total Direct with Rescission</b>			<b>295,084</b>			<b>316,438</b>			<b>7,344</b>			<b>323,782</b>
Reimbursable FTE		47			81			0			81	
<b>Total Direct and Reimb. FTE</b>		<b>1,084</b>			<b>1,217</b>			<b>0</b>			<b>1,217</b>	
Other FTE:												
LEAP		0			0			0			0	
Overtime		0			0			0			0	
<b>Grand Total, FTE</b>		<b>1,084</b>			<b>1,217</b>			<b>0</b>			<b>1,217</b>	
<i>Sub-Allotments and Direct Collections FTE</i>		192			216			0			216	

Program Activity	2022 Increases			2022 Offsets			2022 Request		
	Positions	Est. FTE	Amount	Positions	Est. FTE	Amount	Positions	Est. FTE	Amount
Legal Representation	35	18	4,755	0	0	0	1,171	1,154	328,537
<b>Total Direct</b>	<b>35</b>	<b>18</b>	<b>4,755</b>	<b>0</b>	<b>0</b>	<b>0</b>	<b>1,171</b>	<b>1,154</b>	<b>328,537</b>
Balance Rescission			0			0			0
<b>Total Direct with Rescission</b>			<b>4,755</b>			<b>0</b>			<b>328,537</b>
Reimbursable FTE		0			0			81	
<b>Total Direct and Reimb. FTE</b>		<b>18</b>			<b>0</b>			<b>1,235</b>	
Other FTE:									
LEAP		0			0			0	
Overtime		0			0			0	
<b>Grand Total, FTE</b>		<b>18</b>			<b>0</b>			<b>1,235</b>	
<i>Sub-Allotments and Direct Collections FTE</i>		0			0			216	

**FY 2022 Program Increases/Offsets by Decision Unit**

Civil Division  
 Salaries and Expenses  
 (Dollars in Thousands)

Program Increases	Location of Description by Program Activity	Legal Representation				Total Increases			
		Positions	Agt./Atty.	Est. FTE	Amount	Positions	Agt./Atty.	Est. FTE	Amount
COVID-19 Litigation	Page 25	35	30	18	4,755	35	30	18	4,755
<b>Total Program Increases</b>		<b>35</b>	<b>30</b>	<b>18</b>	<b>4,755</b>	<b>35</b>	<b>30</b>	<b>18</b>	<b>4,755</b>

Program Offsets	Location of Description by Program Activity	Legal Representation				Total Offsets			
		Positions	Agt./Atty.	Est. FTE	Amount	Positions	Agt./Atty.	Est. FTE	Amount
No Program Offsets									
<b>Total Program Offsets</b>									

D. Resources by DOJ Strategic Goal and Strategic Objective

Strategic Goal and Strategic Objective	FY 2020 Enacted			FY 2021 Enacted		
	Direct & Reimb FTE	SubAllot /Dir Coll FTE	Direct Amount	Direct & Reimb FTE	SubAllot /Dir Coll FTE	Direct Amount
<b>Goal 2 Secure the Borders and Enhance Immigration Enforcement and Adjudication</b>						
2.1 Prioritize criminal immigration enforcement	179	0	37,186	181	0	37,601
2.2 Ensure an immigration system that respects the rule of law, protects the safety of U.S. Citizens and serves the national interest	188	0	39,198	191	0	39,823
<b>Subtotal, Goal 2</b>	<b>367</b>	<b>0</b>	<b>76,384</b>	<b>372</b>	<b>0</b>	<b>77,424</b>
<b>Goal 4 Promote Rule of Law, Integrity, and Good Government</b>						
4.1 Uphold the rule of law and integrity in the proper administration of justice	615	192	197,296	743	216	216,378
4.2 Defend first amendments rights to exercise religion and free speech	6	0	1,021	6	0	1,078
4.4 Achieve management excellence	96	0	20,383	96	0	21,558
<b>Subtotal, Goal 4</b>	<b>717</b>	<b>192</b>	<b>218,700</b>	<b>845</b>	<b>216</b>	<b>239,014</b>
<b>TOTAL</b>	<b>1,084</b>	<b>192</b>	<b>295,084</b>	<b>1,217</b>	<b>216</b>	<b>316,438</b>

### Justifications for Technical and Base Adjustments

Civil Division  
Salaries and Expenses  
(Dollars in Thousands)

	Positions	Estimate FTE	Amount
<b>Pay and Benefits</b>			
<p>1 <u>2022 Pay Raise - 2.7%</u> This request provides for a proposed 2.7 percent pay raise to be effective in January of 2022. The amount requested, \$4,250,000, represents the pay amounts for 3/4 of the fiscal year plus appropriate benefits (\$3,172,625 for pay and \$1,077,375 for benefits.)</p>	0	0	4,250
<p>2 <u>Annualization of 2021 Pay Raise</u> This pay annualization represents first quarter amounts (October through December) of the 2021 pay increase of 1.0%. The amount requested, \$514,000, represents the pay amounts for 1/4 of the fiscal year plus appropriate benefits (\$383,000 for pay and \$131,000 for benefits.)</p>	0	0	514
<p>3 <u>FERS Rate Increase</u> Effective October 1, 2021 (FY 2022), the new agency contribution rates of 18.4% (an increase of the prior rate of 17.3%) and 37.6% for law enforcement personnel (an increase of the prior rate of 35.8%), The amount requested, \$1,737,000 represents the funds needed to cover this increase.</p>	0	0	1,737
<p>4 <u>Health Insurance</u> Effective January 2022, the component's contribution to Federal employees' health insurance increases by 2.9 percent. Applied against the 2021 estimate of \$10,379,000 the additional amount required is \$301,000.</p>	0	0	301
<p>5 <u>Retirement - CSRS to FERS Conversion</u> Agency retirement contributions increase as employees under CSRS retire and are replaced by FERS employees. Based on U.S. Department of Justice Agency estimates, we project that the DOJ workforce will convert from CSRS to FERS at a rate of 0.8 percent per year, for both LEO and Non-LEO, based on the past 5 years of DOJ retirement data. The requested increase of \$15,000 is necessary to meet our increased retirement obligations as a result of this conversion.</p>	0	0	15
<b>Subtotal, Pay and Benefits</b>	<b>0</b>	<b>0</b>	<b>6,817</b>
<b>Domestic Rent and Facilities</b>			
<p>1 <u>GSA Rent</u> GSA will continue to charge rental rates that approximate those charged to commercial tenants for equivalent space and related services. The requested increase of \$712,000 is required to meet our commitment to GSA. The costs associated with GSA rent were derived through the use of an automated system, which uses the latest inventory data, including rate increases to be effective FY 2021 for each building currently occupied by Department of Justice components, as well as the costs of new space to be occupied.</p>	0	0	712
<b>Subtotal, Domestic Rent and Facilities</b>	<b>0</b>	<b>0</b>	<b>712</b>

E. Justifications for Technical and Base Adjustments

<b>Foreign Expenses</b>			
<p>1 <u>Capital Security Cost Sharing</u>                      Per P.L. 108-447 and subsequent acts, all agencies with personnel overseas subject to chief of mission authority...shall participate and provide funding in advance for their share of costs of providing new, safe, secure U.S. diplomatic facilities, without offsets, on the basis of the total overseas presence of each agency as determined by the Secretary of State. Originally authorized for FY 2000-2004, the program has been extended annually by OMB and Congress and has also been expanded beyond new embassy construction to include maintenance and renovation costs of the new facilities. For the purpose of this program, State's personnel totals for DOJ include current and projected staffing. The estimated cost to the Department, as provided by State, for FY 2022 is \$113,002,827. Civil currently has 2 positions overseas, and funding of -\$195,000 is requested for this account.</p>	0	0	-195
<p>2 <u>ICASS</u>                      The Department of State charges agencies for administrative support provided to staff based overseas. Charges are determined by a cost distribution system. The FY 2022 request is based on the projected FY 2020 bill for post invoices and other ICASS costs. \$10,000 reflects the change in cost to support existing staffing levels.</p>	0	0	10
<p><b>Subtotal, Foreign Expenses</b></p>	<b>0</b>	<b>0</b>	<b>-185</b>
<p><b>TOTAL DIRECT TECHNICAL and BASE ADJUSTMENTS</b></p>	<b>0</b>	<b>0</b>	<b>7,344</b>

**Crosswalk of 2020 Availability**

Civil Division  
Salaries and Expenses  
(Dollars in Thousands)

Program Activity	FY 2020 Enacted			Reprogramming/Transfers			Carryover	Recoveries/ Refunds	FY 2020 Availability		
	Positions	Actual FTE	Amount	Positions	Actual FTE	Amount	Amount	Amount	Positions	Actual FTE	Amount
Legal Representation	1,136	1,037	295,084	0	0	6,010	10,030	21,246	1,136	1,037	332,370
<b>Total Direct</b>	<b>1,136</b>	<b>1,037</b>	<b>295,084</b>	<b>0</b>	<b>0</b>	<b>6,010</b>	<b>10,030</b>	<b>21,246</b>	<b>1,136</b>	<b>1,037</b>	<b>332,370</b>
Balance Rescission			0			0	0	0			0
Total Direct with Rescission			295,084			6,010	10,030	21,246			332,370
Reimbursable FTE		47			0					47	
Total Direct and Reimb. FTE		1,084			0					1,084	
Other FTE:											
LEAP FTE		0			0					0	
Overtime		0			0					0	
Grand Total, FTE		1,084			0					1,084	
<i>Sub-Allotments and Direct Collections FTE</i>		192								192	

**Reprogramming/Transfers:**

The Civil Division received \$6,075,000 in No-Year ALS funding. The Civil Division transferred \$64,800 for a departmental reprogramming from travel savings.

**Carryover:**

Funds were carried forward into FY 2020 from GLA's FY 2019 no year account and from the GLA FY 2019/2020 multi-year Health Care Fraud Account.

**Recoveries/Refunds:**

Funds were recovered from the Health Care Fraud Account.



**Crosswalk of 2021 Availability**

Civil Division  
Salaries and Expenses  
(Dollars in Thousands)

Program Activity	FY 2021 Enacted			Reprogramming/Transfers			Carryover	Recoveries/ Refunds	FY 2021 Availability		
	Positions	Est. FTE	Amount	Positions	Est. FTE	Amount	Amount	Amount	Positions	Est. FTE	Amount
Legal Representation	1,136	1,136	316,438	0	0	0	8,038	39,775	1,136	1,136	364,251
<b>Total Direct</b>	<b>1,136</b>	<b>1,136</b>	<b>316,438</b>	<b>0</b>	<b>0</b>	<b>0</b>	<b>8,038</b>	<b>39,775</b>	<b>1,136</b>	<b>1,136</b>	<b>364,251</b>
Balance Rescission			0			0	0	0			0
Total Direct with Rescission			316,438			0	8,038	39,775			364,251
Reimbursable FTE		81			0					81	
Total Direct and Reimb. FTE		1,217			0					1,217	
Other FTE:											
LEAP FTE		0			0					0	
Overtime		0			0					0	
Grand Total, FTE		1,217			0					1,217	
<i>Sub-Allotments and Direct Collections FTE</i>		216								216	

**Carryover:**

Funds were carried forward into FY 2021 from GLA's FY 2020 no year account and from the GLA FY 2020/2021 multi-year Health Care Fraud Account.

**Recoveries/Refunds:**

The FY 2021/2022 multi-year Health Care Fraud Account received \$22.8 million in direct collections funding.

As of FY 2021, Civil Division's Vaccine Injury Compensation Fund is now funded via direct collections from HHS as no-year funds, per bill language (\$17.0 million in FY 2021).

### Summary of Reimbursable Resources

Civil Division  
Salaries and Expenses  
(Dollars in Thousands)

Collections by Source	2020 Actual			2021 Estimate			2022 Request			Increase/Decrease		
	Reimb. Pos.	Reimb. FTE	Amount	Reimb. Pos.	Reimb. FTE	Amount	Reimb. Pos.	Reimb. FTE	Amount	Reimb. Pos.	Reimb. FTE	Amount
Commodity Futures Trading Commission	0	0	336	0	0	0	0	0	0	0	0	0
Consumer Financial Protection Bureau	0	0	1,480	0	0	950	0	0	950	0	0	0
Department of the Army	0	0	118	0	0	120	0	0	120	0	0	0
Defense Logistics Agency	0	0	8	0	0	0	0	0	0	0	0	0
Department of Education	0	0	180	0	0	100	0	0	100	0	0	0
Department of Justice	0	0	10,626	0	0	800	0	0	800	0	0	0
Department of Treasury	0	0	250	0	0	300	0	0	300	0	0	0
Department of Health and Human Services, Vaccine Injury Compensation	61	43	12,689	77	77	17,000	90	90	21,738	13	13	4,738
District of Columbia Government	0	0	2,205	0	0	2,205	0	0	2,205	0	0	0
EOUSA	0	0	2,132	0	0	1,500	0	0	1,500	0	0	0
Executive Office for U.S. Trustees	0	0	255	0	0	255	0	0	255	0	0	0
Federal Bureau of Investigation	0	0	750	0	0	750	0	0	750	0	0	0
Federal Communications Commission	0	0	79	0	0	0	0	0	0	0	0	0
Federal Prison System	0	0	180	0	0	100	0	0	100	0	0	0
Other Anticipated Agreements	4	4	4,842	4	4	35,920	4	4	35,920	0	0	0
National Labor Relations Board	0	0	20	0	0	0	0	0	0	0	0	0
<b>Budgetary Resources</b>	<b>65</b>	<b>47</b>	<b>36,150</b>	<b>81</b>	<b>81</b>	<b>60,000</b>	<b>94</b>	<b>94</b>	<b>64,738</b>	<b>13</b>	<b>13</b>	<b>4,738</b>

Obligations by Program Activity	2020 Actual			2021 Estimate			2022 Request			Increase/Decrease		
	Reimb. Pos.	Reimb. FTE	Amount	Reimb. Pos.	Reimb. FTE	Amount	Reimb. Pos.	Reimb. FTE	Amount	Reimb. Pos.	Reimb. FTE	Amount
Legal Representation	65	47	36,150	81	81	60,000	94	94	64,738	13	13	4,738
<b>Budgetary Resources</b>	<b>65</b>	<b>47</b>	<b>36,150</b>	<b>81</b>	<b>81</b>	<b>60,000</b>	<b>94</b>	<b>94</b>	<b>64,738</b>	<b>13</b>	<b>13</b>	<b>4,738</b>

**Summary of Sub-Allotments and Direct Collections Resources**

Civil Division  
Salaries and Expenses  
(Dollars in Thousands)

Sub-Allotments and Direct Collections	2020 Actual			2021 Estimate 1/			2022 Request 1/			Increase/Decrease		
	SubAllot-Dir Coll Pos	SubAllot-Dir Coll FTE	Amount	SubAllot-Dir Coll Pos	SubAllot-Dir Coll FTE	Amount	SubAllot-Dir Coll Pos	SubAllot-Dir Coll FTE	Amount	SubAllot-Dir Coll Pos	SubAllot-Dir Coll FTE	Amount
DEBT COLLECTION MANAGEMENT - 3%	105	89	55,023	105	105	56,731	105	105	56,731	0	0	0
HCFAC	111	103	44,532	111	111	37,775	111	111	37,775	0	0	0
<b>Budgetary Resources</b>	<b>216</b>	<b>192</b>	<b>99,555</b>	<b>216</b>	<b>216</b>	<b>94,506</b>	<b>216</b>	<b>216</b>	<b>94,506</b>	<b>0</b>	<b>0</b>	<b>0</b>

Obligations by Program Activity	2020 Actual			2021 Estimate			2022 Request			Increase/Decrease		
	SubAllot-Dir Coll Pos	SubAllot-Dir Coll FTE	Amount	SubAllot-Dir Coll Pos	SubAllot-Dir Coll FTE	Amount	SubAllot-Dir Coll Pos	SubAllot-Dir Coll FTE	Amount	SubAllot-Dir Coll Pos	SubAllot-Dir Coll FTE	Amount
Legal Representation	216	192	99,555	216	216	94,506	216	216	94,506	0	0	0
<b>Budgetary Resources</b>	<b>216</b>	<b>192</b>	<b>99,555</b>	<b>216</b>	<b>216</b>	<b>94,506</b>	<b>216</b>	<b>216</b>	<b>94,506</b>	<b>0</b>	<b>0</b>	<b>0</b>

1/ Change in Methodology: The amounts reported are for new authority in the year of appropriation and now tie to MAX.

**Detail of Permanent Positions by Category**

Civil Division  
Salaries and Expenses  
(Dollars in Thousands)

Category	FY 2020 Enacted			FY 2021 Enacted			FY 2022 Request					
	Direct Pos.	Reimb. Pos.	SubAllot-Dir	Direct Pos.	Reimb. Pos.	SubAllot-Dir	ATBs	Program	Program	Total Direct	Total Reimb.	Total SubAllot-
			Coll Pos.			Coll Pos.		Increases	Offsets	Pos.	Pos.	Dir Coll Pos
Clerical and Office Services (0300-0399)	0	0	0	0	0	22	0	0	0	0	0	22
Attorneys (905)	832	55	177	866	71	185	0	30	0	896	84	185
Paralegal Specialist (0950)	102	6	9	113	6	9	0	5	0	118	6	9
Others	202	4	30	157	4	0	0	0	0	157	4	0
<b>Total</b>	<b>1,136</b>	<b>65</b>	<b>216</b>	<b>1,136</b>	<b>81</b>	<b>216</b>	<b>0</b>	<b>35</b>	<b>0</b>	<b>1,171</b>	<b>94</b>	<b>216</b>
Headquarters Washington D.C.	1,108	65	216	1,107	81	216	0	35	0	1,142	94	216
US Fields	26	0	0	26	0	0	0	0	0	26	0	0
Foreign Field	2	0	0	3	0	0	0	0	0	3	0	0
<b>Total</b>	<b>1,136</b>	<b>65</b>	<b>216</b>	<b>1,136</b>	<b>81</b>	<b>216</b>	<b>0</b>	<b>35</b>	<b>0</b>	<b>1,171</b>	<b>94</b>	<b>216</b>

### Financial Analysis of Program Changes

Civil Division  
Salaries and Expenses  
(Dollars in Thousands)

Grades	Legal Representation				Total Program Changes	
	Program Increases		Program Decreases		Positions	Amount
	Positions	Amount	Positions	Amount		
GS-14	30	4,296	0	0	30	4,296
GS-11	5	459	0	0	5	459
<b>Total Positions and Annual Amount</b>	<b>35</b>	<b>4,755</b>	<b>0</b>	<b>0</b>	<b>35</b>	<b>4,755</b>
Lapse (-)	-17	-2490	0	0	-17	-2490
11.5 - Other personnel compensation		0		0		-
<b>Total FTEs and Personnel Compensation</b>	<b>18</b>	<b>2,265</b>	<b>0</b>	<b>0</b>	<b>18</b>	<b>2,265</b>
12.1 - Civilian personnel benefits		717		0		717
21.0 - Travel and transportation of persons		71		0		71
22.0 - Transportation of things		4		0		4
23.3 - Communications, utilities, and miscellaneous charges		65		0		65
24.0 - Printing and reproduction		7		0		7
25.1 - Advisory and assistance services		159		0		159
25.2 - Other services from non-federal sources		114		0		114
25.3 - Other goods and services from federal sources		293		0		293
25.6 - Medical care		3		0		3
26.0 - Supplies and materials		15		0		15
31.0 - Equipment		1,042		0		1,042
<b>Total Program Change Requests</b>	<b>18</b>	<b>4,755</b>	<b>0</b>	<b>0</b>	<b>18</b>	<b>4,755</b>

### Summary of Requirements by Object Class

Civil Division  
Salaries and Expenses  
(Dollars in Thousands)

Object Class	FY 2020 Actual		FY 2021 Enacted		FY 2022 Request		Increase/Decrease	
	Act. FTE	Amount	Direct FTE	Amount	Direct FTE	Amount	Direct FTE	Amount
11.1 - Full-time permanent	1,037	145,344	1,136	161,076	1,154	154,902	18	-6,174
11.3 - Other than full-time permanent	0	12,177	0	18,849	0	18,123	0	-726
11.5 - Other personnel compensation	0	3,402	0	4,699	0	5,416	0	717
<i>Overtime</i>	0	0	0	0	0	0	0	0
<i>Other Compensation</i>	0	0	0	0	0	0	0	0
11.8 - Special personal services payments	0	0	0	0	0	200	0	200
<b>Total</b>	<b>1,037</b>	<b>160,923</b>	<b>1,136</b>	<b>184,624</b>	<b>1,154</b>	<b>178,641</b>	<b>18</b>	<b>-5,983</b>
<b>Other Object Classes</b>								
12.1 - Civilian personnel benefits		52,236		61,384		64,232	0	2,848
13.0 - Benefits for former personnel		32		32		31	0	-1
21.0 - Travel and transportation of persons		1,864		941		3,896	0	2,955
22.0 - Transportation of things		232		79		265	0	186
23.1 - Rental payments to GSA		26,841		33,340		27,463	0	-5,877
23.2 - Rental payments to others		317		706		727	0	21
23.3 - Communications, utilities, and miscellaneous charges		3,245		3,699		3,543	0	-156
24.0 - Printing and reproduction		252		232		442	0	210
25.1 - Advisory and assistance services		52,549		39,110		36,120	0	-2,990
25.2 - Other services from non-federal sources		1,346		1,486		3,472	0	1,986
25.3 - Other goods and services from federal sources		7,525		9,379		8,131	0	-1,248
25.4 - Operation and maintenance of facilities		4,076		14,054		14,126	0	72
25.6 - Medical care		0		0		12	0	12
25.7 - Operation and maintenance of equipment		5,386		7,836		3,014	0	-4,822
26.0 - Supplies and materials		683		508		845	0	337
31.0 - Equipment		4,971		6,744		4,846	0	-1,898
42.0 - Insurance claims and indemnities		53		97		17	0	-80
<b>Total Obligations</b>		<b>322,531</b>		<b>364,251</b>		<b>349,823</b>	<b>0</b>	<b>-14,428</b>
<b>Net of:</b>								
Unobligated Balance, Start-of-Year		-10,030		-8,038		0	0	8,038
Transfers/Reprogramming		-6,010		0		0	0	0
Recoveries/Refunds		-21,246		-39,775		-21,286	0	18,489
Balance Rescission		0		0		0	0	0
Unobligated End-of-Year, Available		8,038		0		0	0	0
Unobligated End-of-Year, Expiring		1,801		0		0	0	0
<b>Total Direct Requirements</b>		<b>295,084</b>		<b>316,438</b>		<b>328,537</b>		<b>12,099</b>
Reimbursable FTE								
Full-Time Permanent	47		81		81		0	0
<i>Sub-Allotments and Direct Collections FTE</i>	192		216		216		0	

1/ Non-SES/SL/ST Salary  
2/ Non-SES/SL/ST Award

140,493	142,720	146,573
2,519	3,995	4,104

## **Status of Congressionally Requested Studies, Reports, and Evaluations**

### Civil Division

1. The House Report associated with the FY 2021 appropriations act directs the Civil Division to submit a report within 90 days of enactment of this Act on the details of this reorganization, including the rationale for establishment of a new section; historical denaturalization caseload statistics, including for fiscal years 2016 through 2020; the grounds on which denaturalization cases are brought; and the funding and staffing of denaturalization activity by the Civil Division for fiscal years 2016 through 2020.