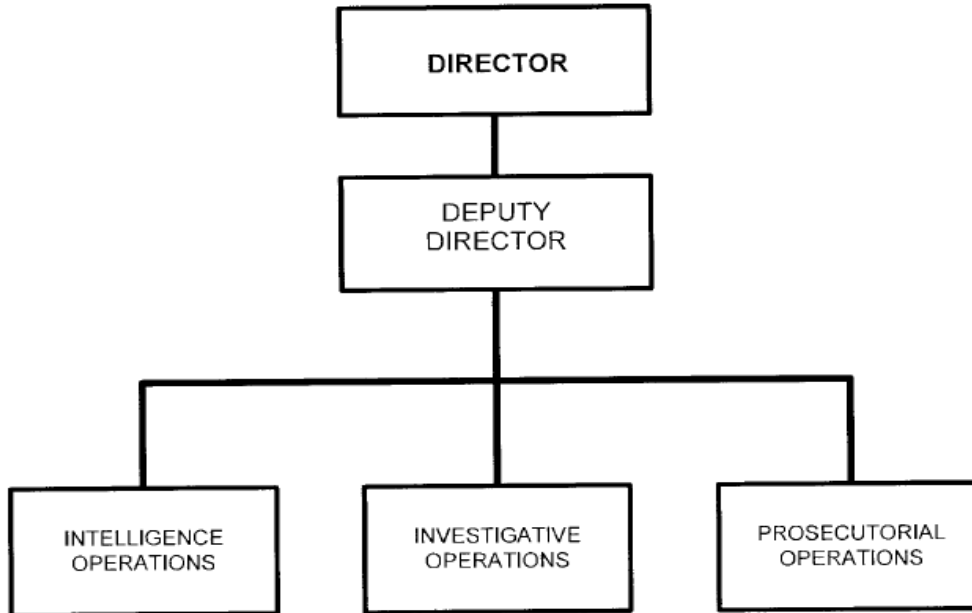


**Organizational Chart**  
Interagency Crime & Drug Enforcement



Approved by

ERIC H. HOLDER, JR.  
Attorney General

Date: 11/26/12

B. Summary of Requirements

**Summary of Requirements**  
 Interagency Crime & Drug Enforcement  
 Discretionary w/o State and Local  
 (Dollars in Thousands)

	FY 2025 Request		
	Positions	Estimate FTE	Amount
<b>2023 Enacted 1/</b>	<b>2,464</b>	<b>2,456</b>	<b>550,458</b>
<b>Total 2023 Enacted</b>	<b>2,464</b>	<b>2,456</b>	<b>550,458</b>
<b>2024 Continuing Resolution 2/</b>	<b>2,464</b>	<b>2,456</b>	<b>550,458</b>
FY 2024 Annualized Continuing Resolution	-119	-119	0
FY 2024 Position/FTE Rightsizing	-90	-102	0
<b>Total 2024 Continuing Resolution</b>	<b>2,255</b>	<b>2,235</b>	<b>550,458</b>
<b>Base Adjustments</b>			
Pay and Benefits	0	0	13,958
Domestic Rent and Facilities	0	0	71
<b>Total Base Adjustments</b>	<b>0</b>	<b>0</b>	<b>14,029</b>
<b>Total Technical and Base Adjustments</b>	<b>0</b>	<b>0</b>	<b>14,029</b>
<b>2025 Current Services</b>	<b>2,255</b>	<b>2,235</b>	<b>564,487</b>
<b>Program Changes</b>			
Offsets:			
Program Offset - Program Reduction	-116	-116	-14,029
Subtotal, Offsets	-116	-116	-14,029
<b>Total Program Changes</b>	<b>-116</b>	<b>-116</b>	<b>-14,029</b>
<b>2025 Total Request</b>	<b>2,139</b>	<b>2,119</b>	<b>550,458</b>
2024 - 2025 Total Change	-116	-116	0

<sup>1/</sup> FY 2023 FTE is actual

<sup>2/</sup> Amounts included herein referring to the FY 2024 Continuing Resolution reflect an Annualized Continuing Resolution level.

B. Summary of Requirements

**Summary of Requirements**  
 Interagency Crime & Drug Enforcement  
 Discretionary w/o State and Local  
 (Dollars in Thousands)

Program Activity	FY 2023 Enacted			FY 2024 Continuing Resolution			FY 2025 Technical and Base Adjustments			FY 2025 Current Services		
	Positions	Actual FTE	Amount	Positions	Est. FTE	Amount	Positions	Est. FTE	Amount	Positions	Est. FTE	Amount
Investigations	1,553	1,549	386,269	1,396	1,381	386,269	0	0	9,744	1,396	1,381	396,013
Prosecutions	911	907	164,189	859	854	164,189	0	0	4,285	859	854	168,474
<b>Total Direct</b>	<b>2,464</b>	<b>2,456</b>	<b>550,458</b>	<b>2,255</b>	<b>2,235</b>	<b>550,458</b>	<b>0</b>	<b>0</b>	<b>14,029</b>	<b>2,255</b>	<b>2,235</b>	<b>564,487</b>
Balance Rescission			0			0			0			0
<b>Total Direct with Rescission</b>			<b>550,458</b>			<b>550,458</b>			<b>14,029</b>			<b>564,487</b>
Reimbursable FTE		0			0			0			0	
<b>Total Direct and Reimb. FTE</b>		<b>2,456</b>			<b>2,235</b>			<b>0</b>			<b>2,235</b>	
Other FTE:												
LEAP		0			0			0			0	
Overtime		0			0			0			0	
<b>Grand Total, FTE</b>		<b>2,456</b>			<b>2,235</b>			<b>0</b>			<b>2,235</b>	
<i>Sub-Allotments and Direct Collections FTE</i>		2,456			2,235			0			2,235	

Program Activity	2025 Increases			2025 Offsets			2025 Request		
	Positions	Est. FTE	Amount	Positions	Est. FTE	Amount	Positions	Est. FTE	Amount
Investigations	0	0	0	-114	-114	-13,787	1,282	1,267	382,226
Prosecutions	0	0	0	-2	-2	-242	857	852	168,232
<b>Total Direct</b>	<b>0</b>	<b>0</b>	<b>0</b>	<b>-116</b>	<b>-116</b>	<b>-14,029</b>	<b>2,139</b>	<b>2,119</b>	<b>550,458</b>
Balance Rescission			0			0			0
<b>Total Direct with Rescission</b>			<b>0</b>			<b>-14,029</b>			<b>550,458</b>
Reimbursable FTE		0			0			0	
<b>Total Direct and Reimb. FTE</b>		<b>0</b>			<b>-116</b>			<b>2,119</b>	
Other FTE:									
LEAP		0			0			0	
Overtime		0			0			0	
<b>Grand Total, FTE</b>		<b>0</b>			<b>-116</b>			<b>2,119</b>	
<i>Sub-Allotments and Direct Collections FTE</i>		0			-116			2,119	

**FY 2025 Program Increases/Offsets by Decision Unit**

Interagency Crime & Drug Enforcement  
 Discretionary w/o State and Local  
 (Dollars in Thousands)

Program Increases	Location of Description by Program Activity	Investigations				Prosecutions				Total Increases			
		Positions	Agt./Atty.	Est. FTE	Amount	Positions	Agt./Atty.	Est. FTE	Amount	Positions	Agt./Atty.	Est. FTE	Amount
No Program Increase													
<b>Total Program Increases</b>													

Program Offsets	Location of Description by Program Activity	Investigations				Prosecutions				Total Offsets			
		Positions	Agt./Atty.	Est. FTE	Amount	Positions	Agt./Atty.	Est. FTE	Amount	Positions	Agt./Atty.	Est. FTE	Amount
Program Offset - Program Reduction		-114	-114	-114	-13,787	-2	-2	-2	-242	-116	-116	-116	-14,029
<b>Total Program Offsets</b>		<b>-114</b>	<b>-114</b>	<b>-114</b>	<b>-13,787</b>	<b>-2</b>	<b>-2</b>	<b>-2</b>	<b>-242</b>	<b>-116</b>	<b>-116</b>	<b>-116</b>	<b>-14,029</b>

**Resources by Department of Justice Strategic Goal and Objective**  
 Interagency Crime & Drug Enforcement  
 Discretionary w/o State and Local  
 (Dollars in Thousands)

Strategic Goal and Strategic Objective	FY 2023 Enacted			FY 2024 Continuing Resolution			FY 2025 Current Services		FY 2025 Increases		FY 2025 Offsets		FY 2025 Total Request		
	Direct & Reimb FTE	SubAllot /Dir Coll FTE	Direct Amount	Direct & Reimb FTE	SubAllot /Dir Coll FTE	Direct Amount	Direct & Reimb FTE	Direct Amount	Direct & Reimb FTE	Direct Amount	Direct & Reimb FTE	Direct Amount	Direct & Reimb FTE	SubAllot /Dir Coll FTE	Direct Amount
<b>Goal 2 Keep Our Country Safe</b>															
2.1 Protect National Security.	0	0	56	0	0	56	0	58	0	0	0	-58	0	0	0
2.2 Counter Foreign and Domestic Terrorism.	6	6	1,437	5	6	1,437	5	1,474	0	0	0	-37	5	0	1,437
2.3 Combat Violent Crime and Gun Violence.	437	437	97,921	398	397	97,921	398	100,415	0	0	-21	-2,494	377	376	97,921
2.4 Enhance Cybersecurity and Fight Cybercrime.	22	22	4,953	20	21	4,953	20	5,082	0	0	-1	-129	19	20	4,953
2.5 Combat Drug Trafficking and Prevent Overdose Deaths.	1,991	1,991	446,091	1,812	1,811	446,091	1,812	457,458	0	0	-94	-11,311	1,718	1,723	446,147
<b>Subtotal, Goal 2</b>	<b>2,456</b>	<b>2,456</b>	<b>550,458</b>	<b>2,235</b>	<b>2,235</b>	<b>550,458</b>	<b>2,235</b>	<b>564,487</b>	<b>0</b>	<b>0</b>	<b>-116</b>	<b>-14,029</b>	<b>2,119</b>	<b>2,119</b>	<b>550,458</b>
<b>TOTAL</b>	<b>2,456</b>	<b>2,456</b>	<b>550,458</b>	<b>2,235</b>	<b>2,235</b>	<b>550,458</b>	<b>2,235</b>	<b>564,487</b>	<b>0</b>	<b>0</b>	<b>-116</b>	<b>-14,029</b>	<b>2,119</b>	<b>2,119</b>	<b>550,458</b>

**Justifications for Technical and Base Adjustments**  
 Interagency Crime & Drug Enforcement  
 Discretionary w/o State and Local  
 (Dollars in Thousands)

	Positions	Estimate FTE	Amount
<b>Pay and Benefits</b>			
1 <u>2025 Pay Raise - 2%</u> This request provides for a proposed 2 percent pay raise to be effective in January of 2025. The amount requested, \$7,296,000 represents the pay amounts for 3/4 of the fiscal year plus appropriate benefits (\$5,107,200 for pay and \$2,188,800 for benefits)	0	0	7,296
2 <u>Annualization of 2024 Pay Raise</u> This pay annualization represents first quarter amounts (October through December) of the 2024 pay increase of 5.2%. The amount requested, \$5,751,000 represents the pay amounts for 1/4 of the fiscal year plus appropriate benefits (\$3,853,170 for pay and \$1,897,830 for benefits.)	0	0	5,751
3 <u>Health Insurance</u> Effective January 2025, the component's contribution to Federal employees' health insurance increases by 5.7 percent. Applied against the 2024 estimate of \$15,985,000 the additional amount required is \$911,000.	0	0	911
<b>Subtotal, Pay and Benefits</b>	<b>0</b>	<b>0</b>	<b>13,958</b>
<b>Domestic Rent and Facilities</b>			
1 <u>GSA Rent</u> GSA will continue to charge rental rates that approximate those charged to commercial tenants for equivalent space and related services. The requested increase of \$47,000 is required to meet our commitment to GSA. The costs associated with GSA rent were derived through the use of an automated system, which uses the latest inventory data, including rate increases to be effective FY 2025 for each building currently occupied by Department of Justice components, as well as the costs of new space to be occupied.	0	0	47
2 <u>Guard Service</u> This includes Department of Homeland Security (DHS) Federal Protective Service charges, Justice Protective Service charges and other security services across the country. The requested increase of \$24,000 is required to meet these commitments.	0	0	24
<b>Subtotal, Domestic Rent and Facilities</b>	<b>0</b>	<b>0</b>	<b>71</b>
<b>TOTAL DIRECT TECHNICAL and BASE ADJUSTMENTS</b>	<b>0</b>	<b>0</b>	<b>14,029</b>

**Crosswalk of 2023 Availability**  
 Interagency Crime & Drug Enforcement  
 Discretionary w/o State and Local  
 (Dollars in Thousands)

Program Activity	FY 2023 Enacted			Reprogramming/Transfers			Carryover	Recoveries/ Refunds	FY 2023 Availability		
	Position s	Actual FTE	Amount	Position s	Est. FTE	Amount	Amount	Amount	Position s	Actual FTE	Amount
Investigations	1,553	1,549	386,269	0	0	0	17,697	2,912	1,553	1,549	406,878
Prosecutions	911	907	164,189	0	0	0	7,584	1,248	911	907	173,021
<b>Total Direct</b>	<b>2,464</b>	<b>2,456</b>	<b>550,458</b>	<b>0</b>	<b>0</b>	<b>0</b>	<b>25,281</b>	<b>4,160</b>	<b>2,464</b>	<b>2,456</b>	<b>579,899</b>
Balance Rescission			0			0	0	0			0
Total Direct with Rescission			550,458			0	25,281	4,160			579,899
Reimbursable FTE		0			0					0	
Total Direct and Reimb. FTE		2,456			0					2,456	
Other FTE:											
LEAP FTE		0			0					0	
Overtime		0			0					0	
Grand Total, FTE		2,456			0					2,456	
<i>Sub-Allotments and Direct Collections FTE</i>		2,456								2,456	

**Crosswalk of 2024 Availability**  
 Interagency Crime & Drug Enforcement  
 Discretionary w/o State and Local  
 (Dollars in Thousands)

Program Activity	FY 2024 Continuing Resolution			Reprogramming/Transfers			Carryover	Recoveries/ Refunds	FY 2024 Availability		
	Position s	Est. FTE	Amount	Position s	Est. FTE	Amount	Amount	Amount	Position s	Est. FTE	Amount
Investigations	1,396	1,381	386,269	0	0	0	17,483	2,912	1,396	1,381	406,664
Prosecutions	859	854	164,189	0	0	0	7,493	1,248	859	854	172,930
<b>Total Direct</b>	<b>2,255</b>	<b>2,235</b>	<b>550,458</b>	<b>0</b>	<b>0</b>	<b>0</b>	<b>24,976</b>	<b>4,160</b>	<b>2,255</b>	<b>2,235</b>	<b>579,594</b>
Balance Rescission			0			0	0	0			0
Total Direct with Rescission			550,458			0	24,976	4,160			579,594
Reimbursable FTE		0			0					0	
Total Direct and Reimb. FTE		2,235			0					2,235	
Other FTE:											
LEAP FTE		0			0					0	
Overtime		0			0					0	
Grand Total, FTE		2,235			0					2,235	
<i>Sub-Allotments and Direct Collections FTE</i>		2,235								2,235	



**Summary of Reimbursable Resources**  
 Interagency Crime & Drug Enforcement  
 Discretionary w/o State and Local  
 (Dollars in Thousands)

Collections by Source	2023 Actual			2024 Estimate			2025 Request			Increase/Decrease		
	Reimb. Pos.	Reimb. FTE	Amount	Reimb. Pos.	Reimb. FTE	Amount	Reimb. Pos.	Reimb. FTE	Amount	Reimb. Pos.	Reimb. FTE	Amount
Asset Forfeiture Fund	0	0	52,222	0	0	52,222	0	0	52,222	0	0	0
<b>Budgetary Resources</b>	<b>0</b>	<b>0</b>	<b>52,222</b>	<b>0</b>	<b>0</b>	<b>52,222</b>	<b>0</b>	<b>0</b>	<b>52,222</b>	<b>0</b>	<b>0</b>	<b>0</b>

Obligations by Program Activity	2023 Actual			2024 Estimate			2025 Request			Increase/Decrease		
	Reimb. Pos.	Reimb. FTE	Amount	Reimb. Pos.	Reimb. FTE	Amount	Reimb. Pos.	Reimb. FTE	Amount	Reimb. Pos.	Reimb. FTE	Amount
Investigations	0	0	52,222	0	0	52,222	0	0	52,222	0	0	0
Prosecutions	0	0	0	0	0	0	0	0	0	0	0	0
<b>Budgetary Resources</b>	<b>0</b>	<b>0</b>	<b>52,222</b>	<b>0</b>	<b>0</b>	<b>52,222</b>	<b>0</b>	<b>0</b>	<b>52,222</b>	<b>0</b>	<b>0</b>	<b>0</b>

**Summary of Sub-Allotments and Direct Collections Resources**

Interagency Crime & Drug Enforcement

Discretionary w/o State and Local

(Dollars in Thousands)

Sub-Allotments and Direct Collections	2023 Actual			2024 Estimate			2025 Request			Increase/Decrease		
	SubAllot-Dir Coll Pos	SubAllot-Dir Coll FTE	Amount	SubAllot-Dir Coll Pos	SubAllot-Dir Coll FTE	Amount	SubAllot-Dir Coll Pos	SubAllot-Dir Coll FTE	Amount	SubAllot-Dir Coll Pos	SubAllot-Dir Coll FTE	Amount
OCDETF (EO, OFC, IOC-2, TRU)	135	51	37,209	151	66	41,468	152	66	55,496	1	0	14,028
DEA	895	940	193,442	734	765	186,986	663	694	170,812	-71	-71	-16,174
USA	884	881	159,906	824	821	164,832	822	819	164,590	-2	-2	-242
FBI	450	483	134,321	450	486	128,382	406	443	130,451	-44	-43	2,069
ATF	48	50	12,785	48	50	13,392	48	50	13,711	0	0	319
USMS	40	39	10,544	39	38	13,252	39	38	13,251	0	0	-1
CRM	12	12	2,251	9	9	2,146	9	9	2,147	0	0	1
<b>Budgetary Resources</b>	<b>2,464</b>	<b>2,456</b>	<b>550,458</b>	<b>2,255</b>	<b>2,235</b>	<b>550,458</b>	<b>2,139</b>	<b>2,119</b>	<b>550,458</b>	<b>-116</b>	<b>-116</b>	<b>0</b>

Obligations by Program Activity	2023 Actual			2024 Estimate			2025 Request			Increase/Decrease		
	SubAllot-Dir Coll Pos	SubAllot-Dir Coll FTE	Amount	SubAllot-Dir Coll Pos	SubAllot-Dir Coll FTE	Amount	SubAllot-Dir Coll Pos	SubAllot-Dir Coll FTE	Amount	SubAllot-Dir Coll Pos	SubAllot-Dir Coll FTE	Amount
Investigations	1,553	1,549	386,269	1,396	1,381	386,269	1,282	1,267	382,226	-114	-114	-4,043
Prosecutions	911	907	164,189	859	854	164,189	857	852	168,232	-2	-2	4,043
<b>Budgetary Resources</b>	<b>2,464</b>	<b>2,456</b>	<b>550,458</b>	<b>2,255</b>	<b>2,235</b>	<b>550,458</b>	<b>2,139</b>	<b>2,119</b>	<b>550,458</b>	<b>-116</b>	<b>-116</b>	<b>0</b>

**Detail of Permanent Positions by Category**  
 Interagency Crime & Drug Enforcement  
 Discretionary w/o State and Local  
 (Dollars in Thousands)

Category	FY 2023 Enacted			FY 2024 Continuing Resolution			FY 2025 Request					
	Direct Pos.	Reimb. Pos.	SubAllot-Dir	Direct Pos.	Reimb. Pos.	SubAllot-Dir	ATBs	Program	Program	Total Direct	Total Reimb.	Total SubAllot-
			Coll Pos.			Coll Pos.		Increases	Offsets	Pos.	Pos.	Dir Coll Pos
Intelligence Series (132)	135	0	135	125	0	125	0	0	0	125	0	125
Human Resources Management (0200-0260)	1	0	1	1	0	1	0	0	0	1	0	1
Clerical and Office Services (0300-0399)	314	0	314	127	0	152	0	0	0	127	0	152
Accounting and Budget (500-599)	25	0	25	27	0	27	0	0	0	27	0	27
Paralegals / Other Law (900-998)	71	0	0	0	0	0	0	0	0	0	0	0
Attorneys (905)	543	0	543	584	0	584	0	0	-2	582	0	582
Paralegal Specialist (0950)	-52	0	19	-53	0	-78	0	0	0	-53	0	-78
Information & Arts (1000-1099)	11	0	11	11	0	11	0	0	0	11	0	11
Business & Industry (1100-1199)	6	0	6	6	0	6	0	0	0	6	0	6
Misc. Inspectors/Investigative Assistants (1802)	88	0	88	88	0	88	0	0	0	88	0	88
Criminal Investigative Series (0082 & 1811)	1,201	0	1201	1,211	0	1211	0	0	-114	1,097	0	1097
Information Technology Mgmt (2210-2299)	13	0	13	20	0	20	0	0	0	20	0	20
Motor Vehicle Operations (5703)	108	0	108	108	0	108	0	0	0	108	0	108
<b>Total</b>	<b>2,464</b>	<b>0</b>	<b>2464</b>	<b>2,255</b>	<b>0</b>	<b>2255</b>	<b>0</b>	<b>0</b>	<b>-116</b>	<b>2,139</b>	<b>0</b>	<b>2139</b>
Headquarters Washington D.C.	84	0	84	84	0	102	0	0	0	84	0	102
US Fields	2,372	0	2372	2,372	0	2145	0	0	-116	2,256	0	2029
Foreign Field	8	0	8	8	0	8	0	0	0	8	0	8
<b>Total</b>	<b>2,464</b>	<b>0</b>	<b>2464</b>	<b>2,464</b>	<b>0</b>	<b>2255</b>	<b>0</b>	<b>0</b>	<b>-116</b>	<b>2,348</b>	<b>0</b>	<b>2139</b>

### Financial Analysis of Program Changes

Interagency Crime & Drug Enforcement

Discretionary w/o State and Local

(Dollars in Thousands)

Grades	Investigations				Prosecutions				Total Program Changes	
	Program Increases		Program Decreases		Program Increases		Program Decreases		Positions	Amount
	Positions	Amount	Positions	Amount	Positions	Amount	Positions	Amount		
GS-15	0	0	0	0	0	0	-2	-242	-2	-242
GS-13	0	0	-114	-13,787	0	0	0	0	-114	-13,787
<b>Total Positions and Annual Amount</b>	<b>0</b>	<b>0</b>	<b>-114</b>	<b>-13,787</b>	<b>0</b>	<b>0</b>	<b>-2</b>	<b>-242</b>	<b>-116</b>	<b>-14,029</b>
Lapse (-)	0	0	0	3,585	0	0	0	63	0	3,648
11.5 - Other personnel compensation		0		-689		0		-12		-701
<b>Total FTEs and Personnel Compensation</b>	<b>0</b>	<b>0</b>	<b>-114</b>	<b>-10,891</b>	<b>0</b>	<b>0</b>	<b>-2</b>	<b>-191</b>	<b>-116</b>	<b>-11,082</b>
12.1 - Civilian personnel benefits		0		-2,896		0		-51		-2,947
<b>Total Program Change Requests</b>	<b>0</b>	<b>0</b>	<b>-114</b>	<b>-13,787</b>	<b>0</b>	<b>0</b>	<b>-2</b>	<b>-242</b>	<b>-116</b>	<b>-14,029</b>

### Summary of Requirements by Object Class

Interagency Crime & Drug Enforcement

Discretionary w/o State and Local

(Dollars in Thousands)

Object Class	FY 2023 Actual		FY 2024 Continuing Resolution		FY 2025 Request		Increase/Decrease	
	Act. FTE	Amount	Direct FTE	Amount	Direct FTE	Amount	Direct FTE	Amount
11.1 - Full-time permanent	2,456	303,831	2,235	303,831	2,119	293,450	-116	-10,381
11.3 - Other than full-time permanent	0	4,532	0	4,532	0	4,532	0	0
11.5 - Other personnel compensation	0	3,074	0	3,074	0	2,373	0	-701
<i>Overtime</i>	0	0	0	0	0	0	0	0
<i>Other Compensation</i>	0	0	0	0	0	0	0	0
11.8 - Special personal services payments	0	93	0	93	0	93	0	0
<b>Total</b>	<b>2,456</b>	<b>311,530</b>	<b>2,235</b>	<b>311,530</b>	<b>2,119</b>	<b>300,448</b>	<b>-116</b>	<b>-11,082</b>
<b>Other Object Classes</b>								
12.1 - Civilian personnel benefits		52,805		52,805		49,858	0	-2,947
21.0 - Travel and transportation of persons		5,744		5,744		5,744	0	0
22.0 - Transportation of things		16		16		16	0	0
23.1 - Rental payments to GSA		2,018		2,018		2,018	0	0
23.2 - Rental payments to others		57		57		57	0	0
23.3 - Communications, utilities, and miscellaneous charges		1,847		1,847		1,847	0	0
24.0 - Printing and reproduction		7		7		7	0	0
25.1 - Advisory and assistance services		3,327		3,327		3,327	0	0
25.2 - Other services from non-federal sources		9,534		9,534		9,534	0	0
25.3 - Other goods and services from federal sources		157,710		157,405		142,298	0	-15,107
25.4 - Operation and maintenance of facilities		764		764		764	0	0
25.7 - Operation and maintenance of equipment		4,039		4,039		4,039	0	0
26.0 - Supplies and materials		1,230		1,230		1,230	0	0
31.0 - Equipment		1,280		1,280		1,280	0	0
32.0 - Land and structures		1		1		1	0	0
41.0 - Grants, subsidies, and contributions		0		0		4	0	4
42.0 - Insurance claims and indemnities		4		4		0	0	-4
<b>Total Obligations</b>		<b>551,913</b>		<b>551,608</b>		<b>522,472</b>	<b>0</b>	<b>-29,136</b>
<b>Net of:</b>								
Unobligated Balance, Start-of-Year		-25,281		-24,976		24,976	0	49,952
Transfers/Reprogramming		0		0		0	0	0
Recoveries/Refunds		-4,160		-4,160		3,010	0	7,170
Balance Rescission		0		0		0	0	0
Unobligated End-of-Year, Available		24,976		24,976		0	0	-24,976
Unobligated End-of-Year, Expiring		3,010		3,010		0	0	-3,010
<b>Total Direct Requirements</b>		<b>550,458</b>		<b>550,458</b>		<b>550,458</b>		<b>0</b>
Reimbursable FTE								
Full-Time Permanent	0		0		0		0	0
<i>Sub-Allotments and Direct Collections FTE</i>	2,456		2,235		2,119		-116	

### Summary of Requirements by Grade

Interagency Crime & Drug Enforcement  
 Discretionary w/o State and Local  
 (Dollars in Thousands)

Grades and Salary Ranges	2023 Enacted		2024 Continuing Resolution Continuing		2025 Request		Increase/Decrease	
	Direct Pos.	Amount	Direct Pos.	Amount	Direct Pos.	Amount	Direct Pos.	Amount
SES/SL \$119,554 - 179,700	2	0	2	0	2	0	0	0
GS-15 \$123,758 - 155,500	-27	0	16	0	14	0	-2	0
GS-14 \$105,211 - 136,771	0	0	93	0	93	0	0	0
GS-13 \$89,033 - 115,742	0	0	710	0	596	0	-114	0
GS-12 \$74,872 - 97,333	381	0	381	0	381	0	0	0
GS-11 \$62,467 - 81,204	0	0	179	0	179	0	0	0
GS-10 \$56,857 - 73,917	119	0	119	0	119	0	0	0
GS-9 \$51,630 - 67,114	-108	0	97	0	97	0	0	0
GS-8 \$46,745 - 60,765	103	0	103	0	103	0	0	0
GS-7 \$42,209 - 54,875	251	0	251	0	251	0	0	0
GS-6 \$37,983 - 49,375	273	0	273	0	273	0	0	0
GS-5 \$37,075 - 44,293	21	0	21	0	21	0	0	0
GS-4 \$30,456 - 39,590	6	0	6	0	6	0	0	0
Ungraded	0	0	213	0	213	0	0	0
<b>Total, Appropriated Positions</b>	<b>1,021</b>	<b>0</b>	<b>2,464</b>	<b>0</b>	<b>2,348</b>	<b>0</b>	<b>-116</b>	<b>0</b>
<b>Average SES Salary</b>		<b>0</b>		<b>0</b>		<b>0</b>		
<b>Average GS Salary</b>		<b>0</b>		<b>0</b>		<b>0</b>		
<b>Average GS Grade</b>		<b>9</b>		<b>11</b>		<b>10</b>		